

Secutix 360 to TIXnGO interface

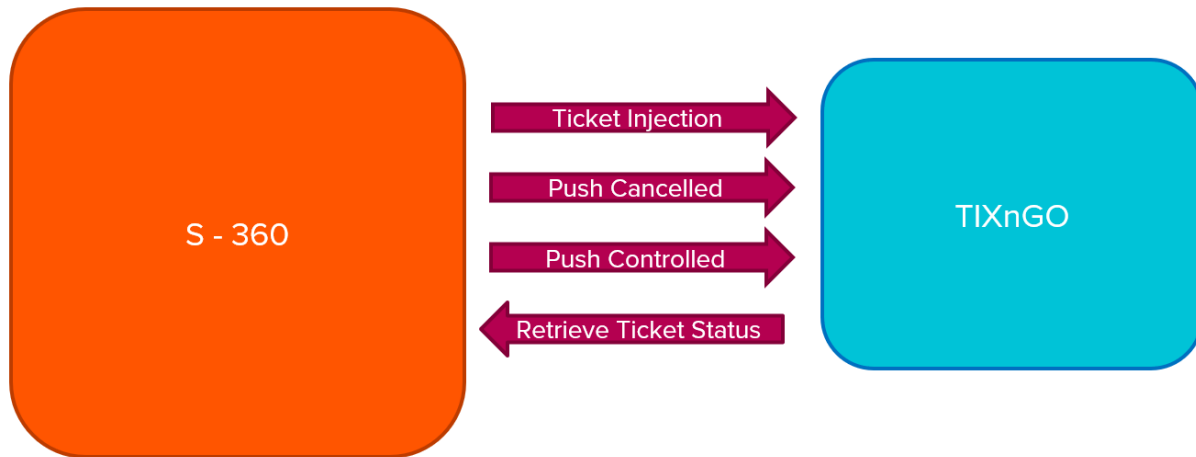
TIXnGO is the leading secure mobile wallet solution provided by the SecuTix company.

Please refer to [this page](#) for the functionalities of the product.

The document describes the features and the setup steps of the interface between SecuTix 360 and TIXnGO

- [Data streams](#)
- [Global setup of the interface](#)
- [Which products can be injected into TIXnGO?](#)

Data streams



Ticket Injection: External printing. When executing this function, the ticket will pass to "printed" status on Secutix, and it will be injected on TIXnGO

Cancelled ticket: Push that has been cancelled in Secutix into TIXnGO. So the new status of the processed ticket will be cancelled on TIXnGO

Controlled ticket: Push all the tickets that have been controlled to TIXnGO, so the new status in TIXnGO will be assigned. Please note that when a ticket has been controlled is not transferable anymore.

Retrieve status from TIXnGO: Returns the current status of the ticket to S- 360 to TIXnGO.

Global setup of the interface

As for SecuTix 360, the TixnGo system is perceived as an external printing system. Tickets injected into TIXnGO are considered as printed.



In case of multi organization, the organization must be set up in the organization owing the inventory of the tickets (the organization where the catalog is defined)

To set it up:

- 1.) In Organization/Tools/Interfaces create a new External Printing Interface of type "TIXnGO" or "TixnGO with ticket template" (If you want to use the Ticket Template Editor to custom the data send to TIXNGO [TIXnGO Customization of the data injected by SecuTix](#))
- 2.) Fill in the API URL provided by TIXnGO in the URL field. It must end by organizer/tickets
- 3.) Fill in the username provided by TIXnGO (I guess the value does not matter)
- 4.) In the password field, fill in the API key provided by TIXnGO
- 5.) Inject some test tickets.

☆ *Batch > TIXnGO for testing environment*

Interface type	External printing
Type	TixnGO
Internal name *	<div>EN * TIXnGO for testing environment</div> <div>FR</div> <div>CA</div> <div>IT</div> <div>DE</div>
URL	<div>https://pp5-api.tixngo.io/v3/organizer/tickets</div>
Login	<div>tplay@tixngo.io</div>
Password	<div>.....</div>
Email notification to recipients, execution failed	<div></div>
Custom parameters (key=value)	<div>excludeTicketResale=true overrideVisibilityFlagForInvalidationReasons=RESALE_PENDING,RESOLD</div>

The field "Email notification...." allows you to receive emails when one of the asynchronous processes described below is failing.



Important

Please do not set up different interfaces on the same organization, else the push cancelled tickets and push will not work.

Which products can be injected into TIXnGO?

- Event/ Competitions
- Passes
- Services

NEW!

- Memberships
- Season Tickets

For more detailed info, please refer to the specific site:

- [1. Ticket Injection or Ticket External Printing](#)
- [2. Push Cancelled or Invalidated Tickets](#)
- [3. Push Controlled tickets](#)
- [4. Retrieve ticket status from TIXnGO](#)
- [5. Custom Parameters](#)
- [6. Cultural Contact Creation & Distribution](#)
- [TIXNGO For Away Fans - WIP](#)

